

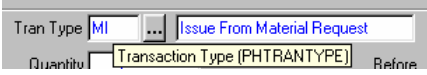
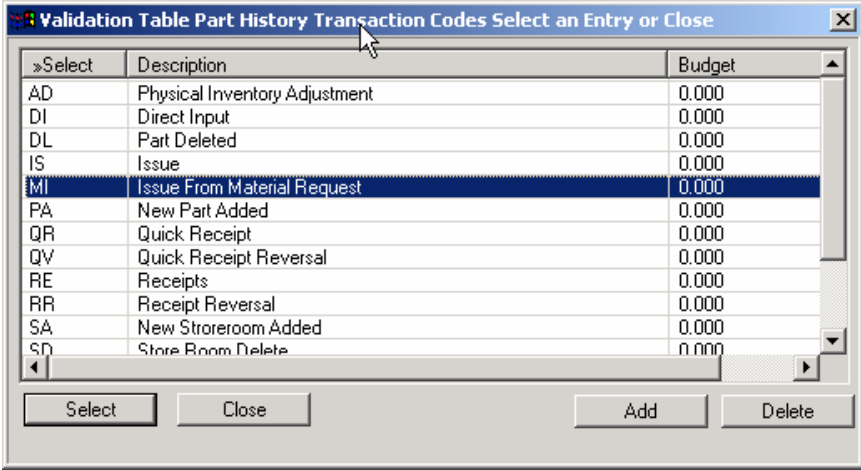
Purpose

To print the description of an edit table value on an R&R report.

Overview

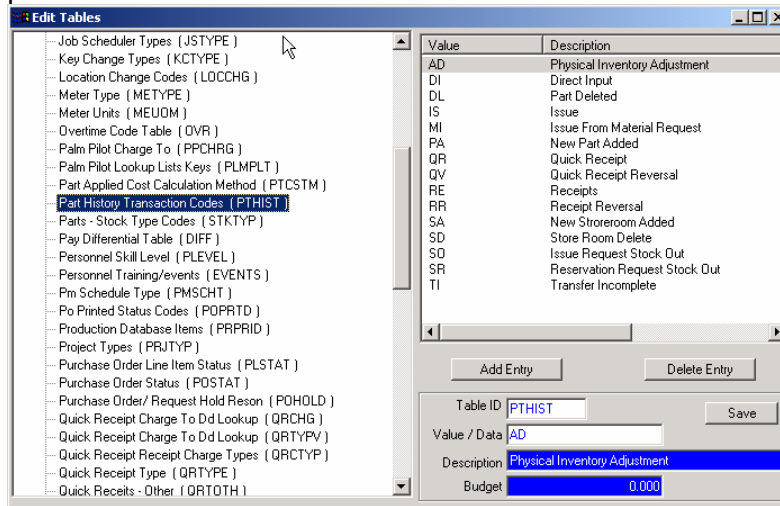
All edit tables are stored in the Edit Table database (EDTABLE). Therefore, you must build a calculated field to tell the report which edit table you want.

Steps

Steps:	Example:
<p>1. Know the name of the field that has the lookup.</p> <p>In SOMAX, hold your cursor over the field, the tool tip will appear and the field name is inside the parentheses.</p> 	<p>PHTRANTYPE</p>
<p>2. Know the name of the edit table key.</p> <p>In SOMAX, click on the drop down to display the edit table and write down the edit table name found on the title bar of the edit table window:</p>  <p>The edit table name is after the "Validation Table". In this example the edit table name is "Part History Transaction Codes".</p>	<p>Part History Transaction Code</p>

3. Access System Manager, **Edit Tables** and search for this edit table name. Write down the edit table key which is located in parentheses.

PTHIST



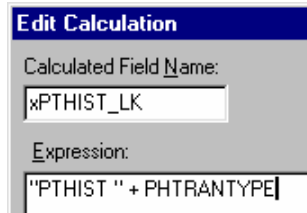
4. Build the linking field in R&R.

'PTHIST ' + PHTRANTYPE

Select **Calculated Field** from the *Calculations* menu and click **New**.

The calculated field name can be anything you want. The definition is the name edit table key plus the field name.

Inside the quotes of the expression there **MUST ALWAYS** be **7** characters (adding spaces if necessary) **AND** it is **CASE SENSITIVE** inside the quotes.



5. Build the database relation:

Select **Relations** from the *Database* menu and click **New** if there are relations, otherwise you will be shown the following window.

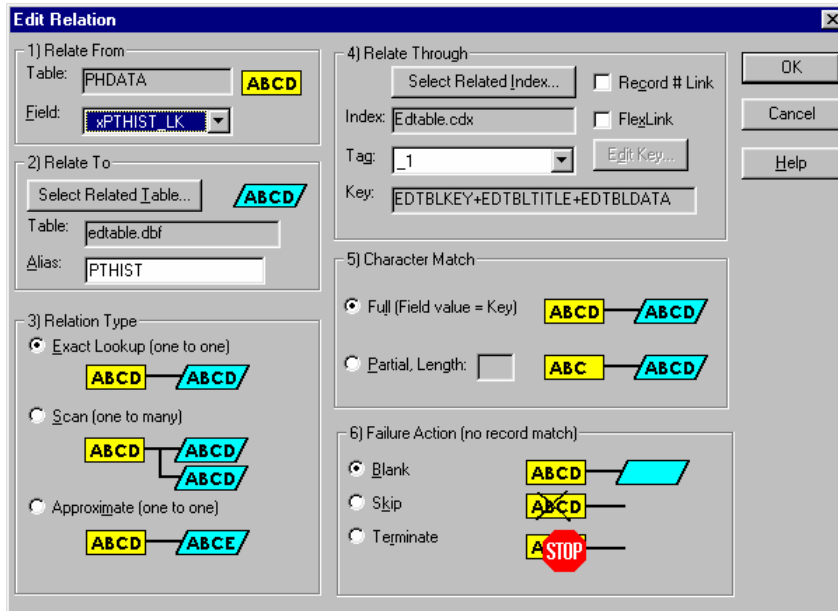
The linking field is the name of the calculated field you created in step 3.

The related table is ALWAYS **EDTABLE.DBF**

The relation type is ALWAYS **Exact Lookup** (one to one)

The related index is ALWAYS **EDTABLE.CDX** and the Tag is ALWAYS **_1**.

And the character match is ALWAYS **Full**.



6. Place the edit table description field (EDTBLDESC) onto the report:

ALWAYS use the EDTBLDESC field on the report to print the description of an edit table value.

